



# BASIC RULES OF CONDUCT



Use designated walkaways



Follow staff instructions



Respect safety signs



Report any risks



## SAFETY

## INSTRUCTIONS

Your safety, **our priority**

## HOW TO ACT IN CASE OF..

### Emergency / Accidents

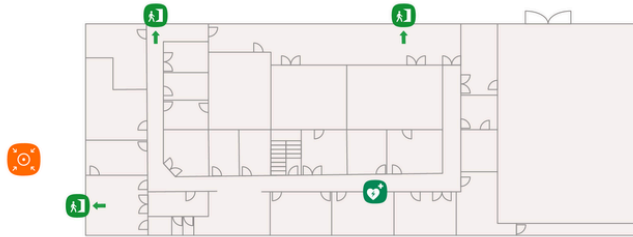
- 1 Immediately **inform** Applus+ Staff
- 2 If you are alone, **call** one of the emergency numbers (listed on your back access card)
- 3 Our facilities are equipped with **defibrillators** to use in the event of a cardiac emergency

### Evacuation

- 1 **Stay calm** – leave immediately
- 2 **Walk**, don't run
- 3 **Close doors** behind you (do not lock them)
- 4 Do not use the elevator, **use stairs**
- 5 **Follow the evacuation signals**
- 6 Ask others to move away from the building
- 7 **Do not return for people or belongings**
- 8 **Go to the meeting point** and stay there

# EVACUATION ROUTE

Arplus<sup>+</sup>



Unit 3 – Ground Floor



Unit 3 – First Floor



**EMERGENCY  
NUMBER**

**External Phone  
+44 (0)1327 857500**



Emergency Exit



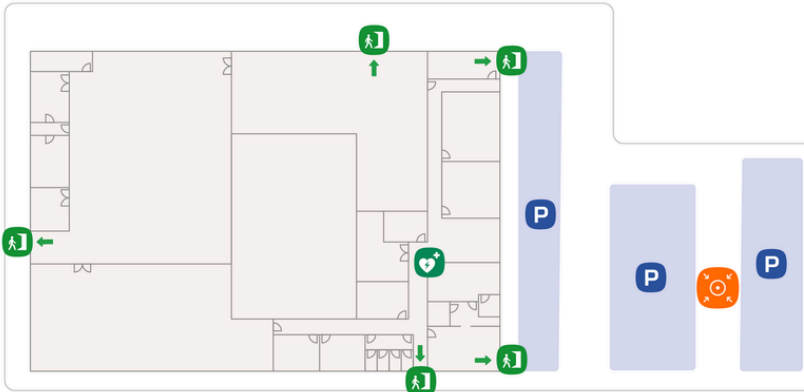
Defibrillators



Meeting point

# EVACUATION ROUTE

Arplus<sup>+</sup>



Unit 1505 - Ground Floor



EMERGENCY  
NUMBER

External Phone  
+44 (0)1327 857500



Emergency Exit



Defibrillators



Meeting point